

Through this project, we want to revive Semmering as a sustainable city and give visitors unforgettable memory.

The railway passing through Semmering is not only designated as UNESCO heritage site, but also an attractive factor for many tourists, so we have set the starting point for this project as Semmering Railway.

The concepts of railroad tracks and waiting room are reflected in our project.

In addition, it brings people together through programs that reflect local culture and specialties, and provides a variety of entertainment to the Semmering area.

Through this, they establish a new meeting place in Semmering and connect each other.

PLUSSES

BEAUTIFUL SCENERY FROM ANYWHERE

UNESCO-DESIGNATED TRAIN STATION

RICH NATURAL SOURCE

PLEASANT SUMMER CLIMATE

CULTURALLY DISTINCTIVE ELEMENTS

LOCAL ELEMENTS CONNECTED BY MAIN ROAD

MAXIMIZE COMMUNITY SPACE

LOCAL SCHOOL & ATELIER
: music , literature , wood-working

POP-UP STORE & SHOWROOM

REST IN FULL VIEW OF THE SCENERY

MINUSES

SMALL SURROUNDING POPULATION

LACK OF COORDINATION

LACK OF FACE-TO-FACE CONTACT

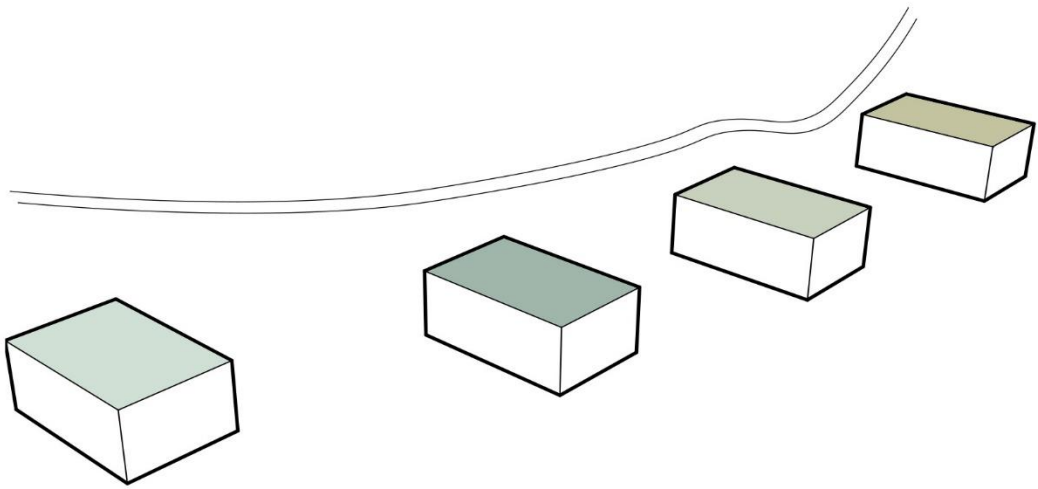
LACK OF DIVERSITY IN BUILDINGS

LACK OF CULTURAL RESOURCE UTILIZATION

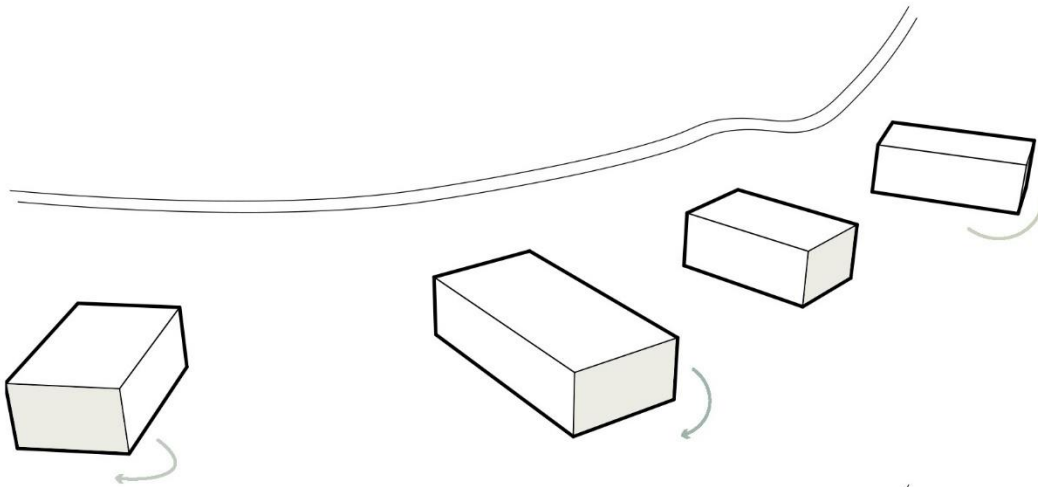
INSUFFICIENT ENTERTAINMENT

PUBLIC CAFE & BAKERY
: using regional specialties

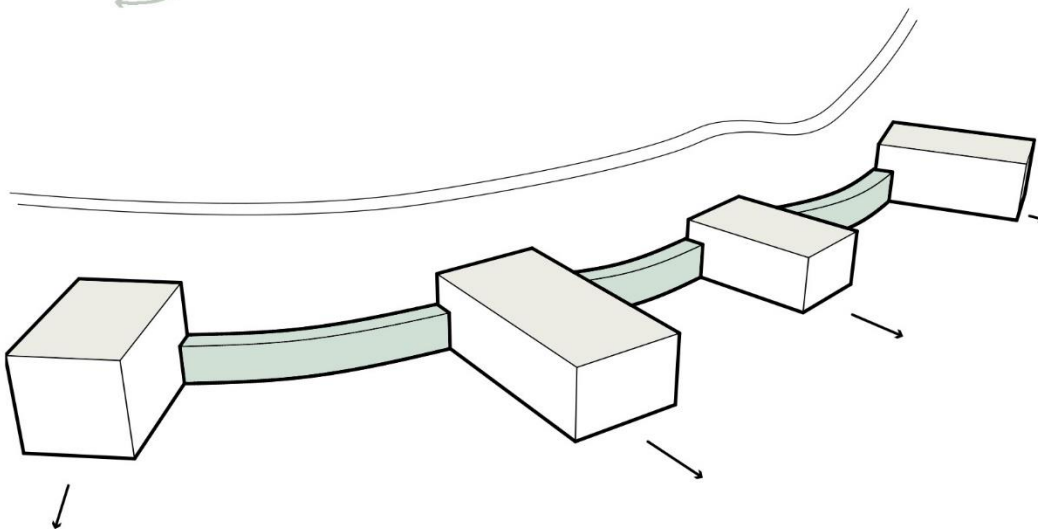
SMALL CONERT HALL & PUB



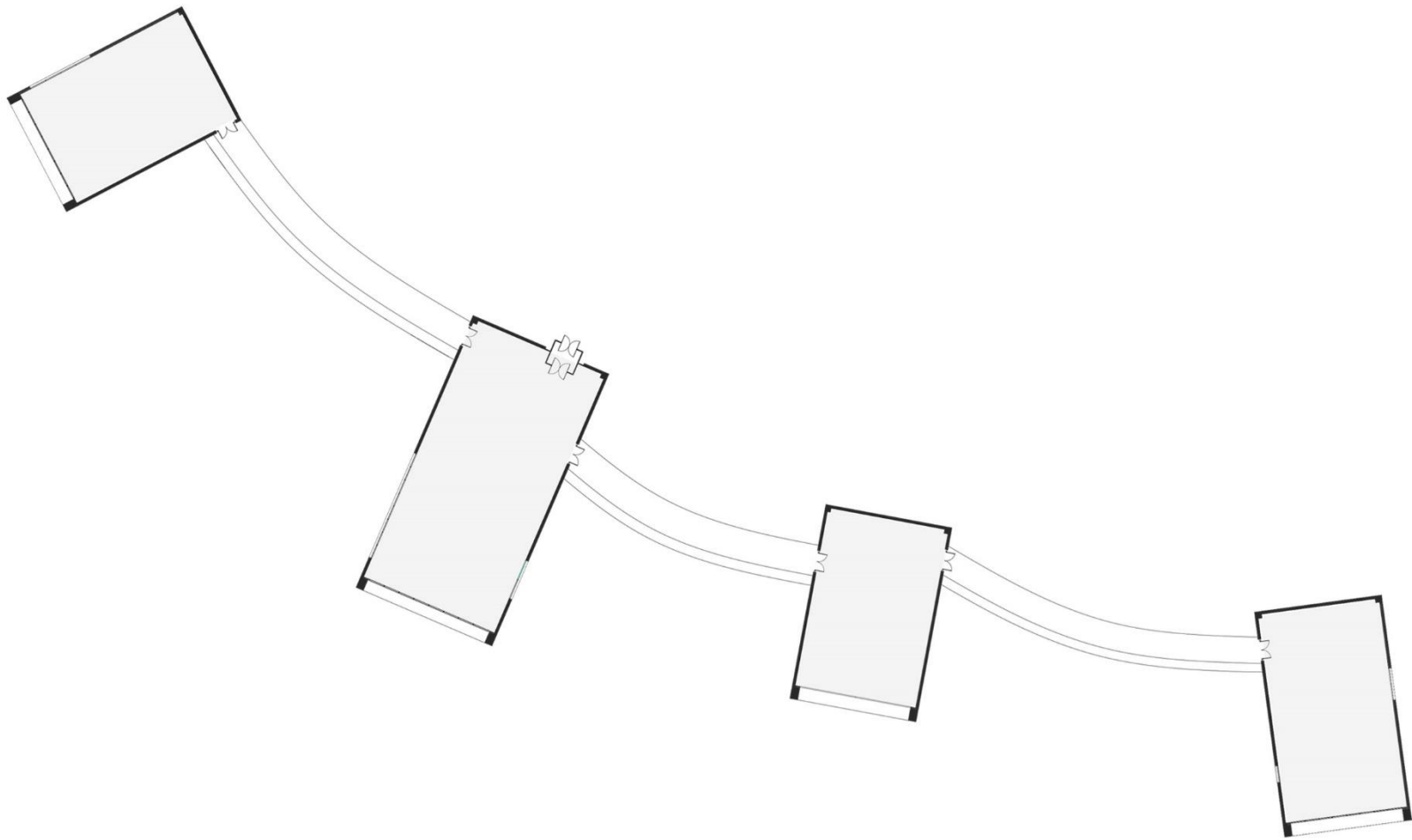
We placed four mass next to the main road
and put the program in each mass.



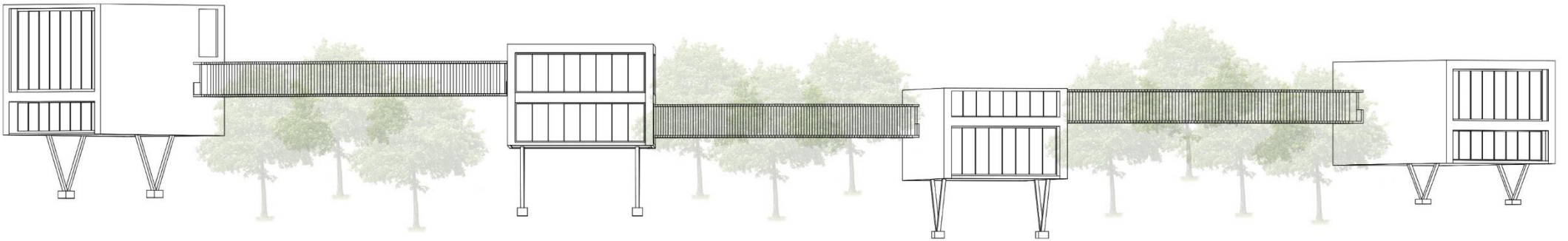
We wanted a different view in each mass, and
we all directed it differently.
And horizontally expanded for a sense of space in Mass.



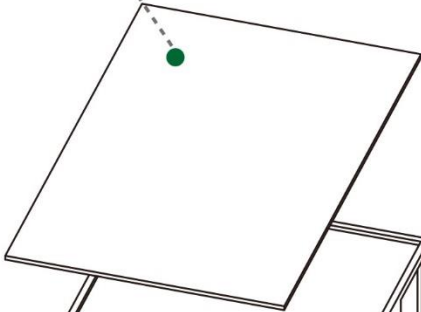
Each mass was connected through a passageway,
and various connections and experiences were hoped to occur
through a walk of the passageway.
And vertical expansion was made for the sense of space in mass.



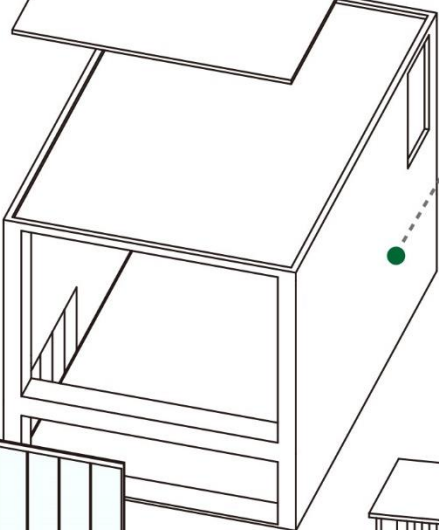
► Floor Plan



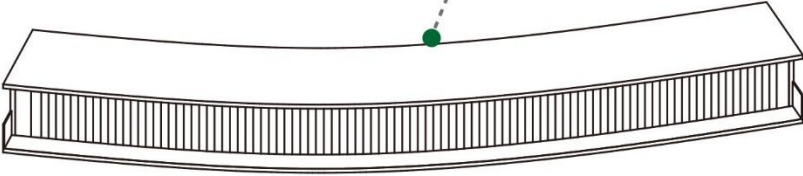
Solar Panel



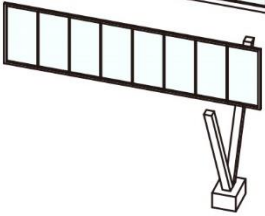
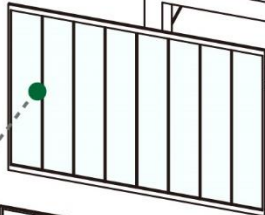
Gypsum Plaster



Wooden Ceiling

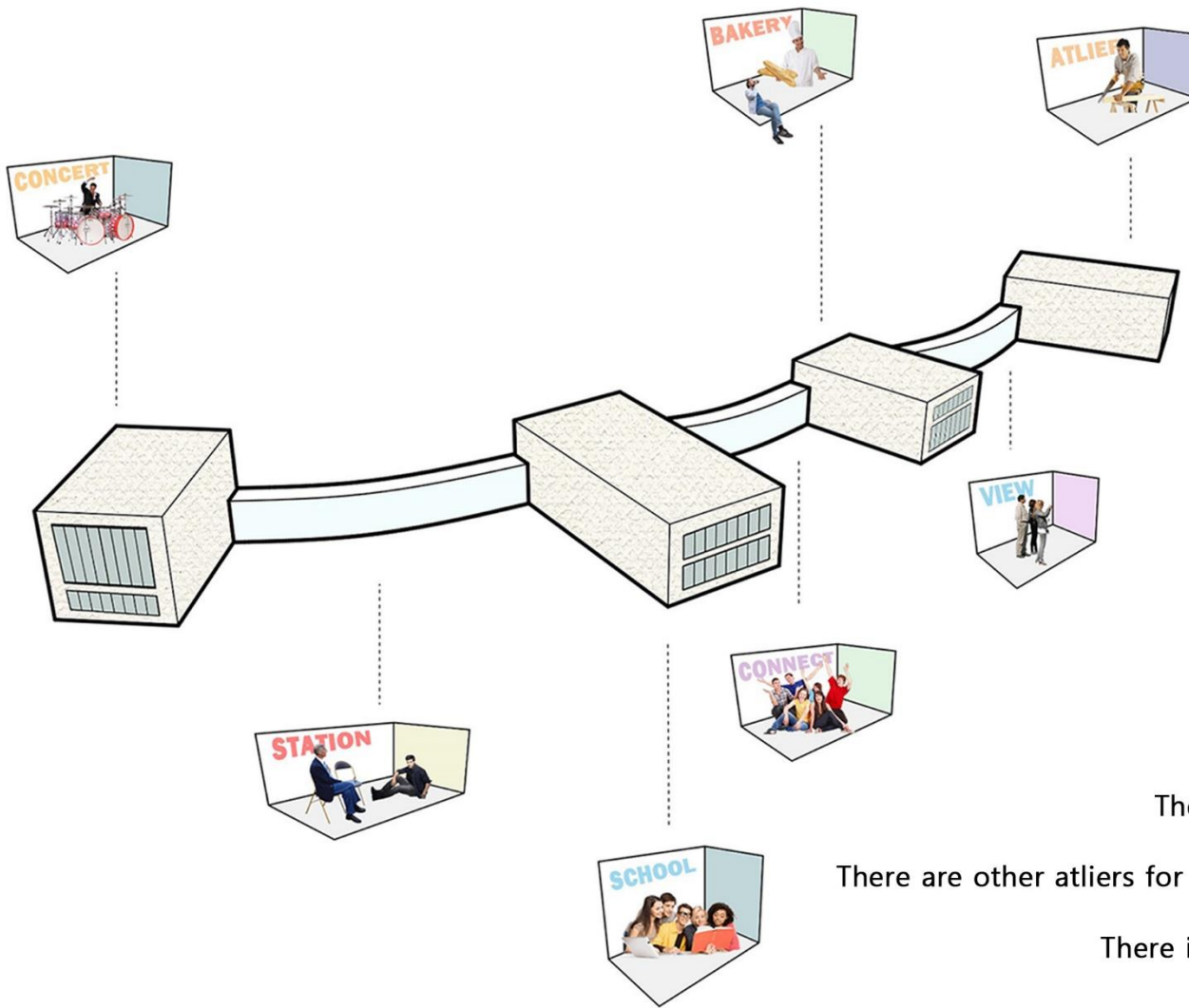


Curtain Wall

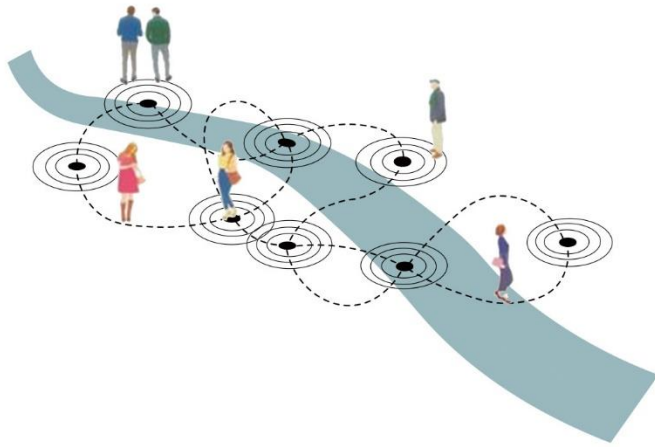


Structual Braces

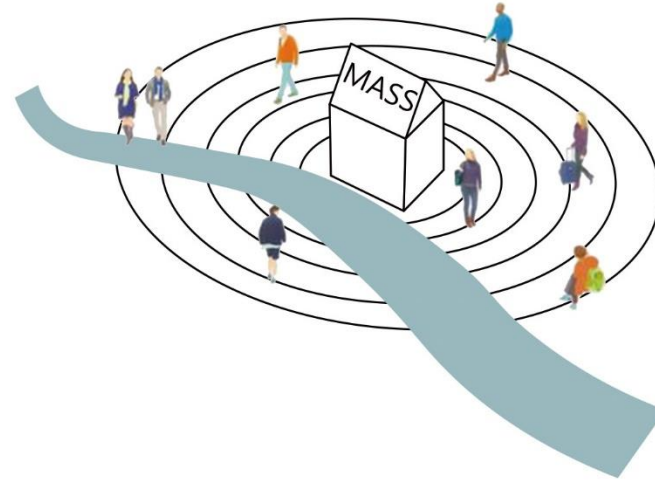




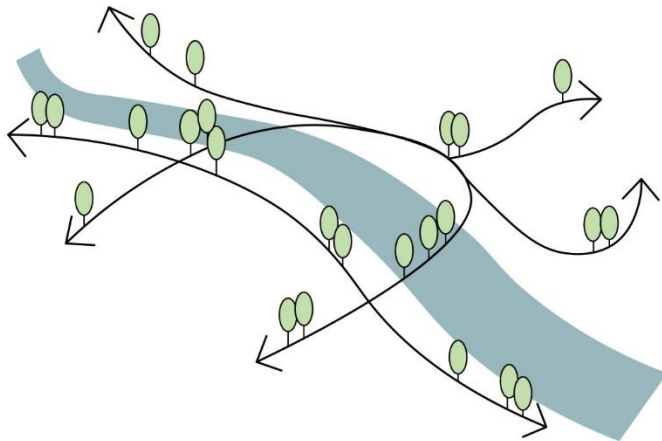
Programs are organized around the local school. The local school offers a venue for the exchange of music and literature that flourishes in Austria. There are other ateliers for artists, bakery using local specialties, and pub and cafe that lead to meetings between people. There is also a rest area where you can fully enjoy Semmering.



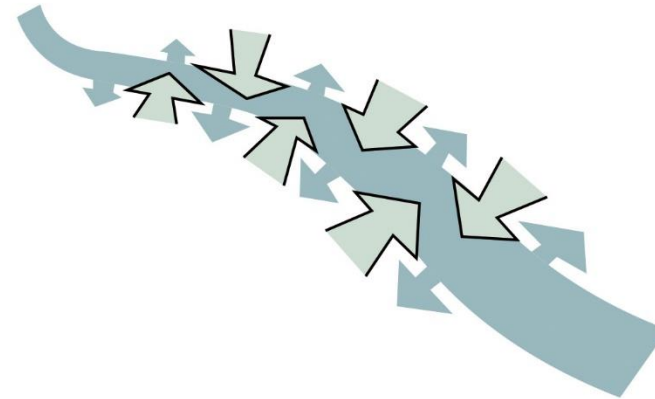
A network that connects each other and becomes a venue for exchange.



It becomes a staging area that attracts people through interesting and radioactive programs.



The surrounding natural environment provides users with a beautiful view of summer through a large window. It also moves from nature to the inside and outside as an arrangement that matches nature.



By installing an open passageway, people not only became more accessible, but also increased their influence on the surroundings of mass.

